



Ia Ora Na Puddle Jumpers !
Welcome to French Polynesia 🌺

by Tahiti Crew 🚢



Ia Orana, Puddle Jumpers !

Welcome to French Polynesia, where we aim to make your entry formalities seamless. After weeks of offshore sailing, Tahiti Crew is here to ensure a smooth check-in process, letting you enjoy our paradise islands from day one.

About Us

Since 2012, Tahiti Crew has been providing expert services to yachting crews. We expanded in 2013 to assist Puddle Jumpers, offering support from our Marina Taina office with English-speaking local staff. Our expertise and presence in remote islands make us a trusted partner for the Pacific Puddle Jump fleet.

Special Benefits for the 2024 PPJ Fleet

We're excited to offer exclusive rates and discount cards for rally members, covering official formalities and additional assistance during your stay in French Polynesia.

For most yachts, entry starts in the Marquesas, where our representatives in Nuku Hiva and Hiva Oa are ready to assist.

Entry Formalities Overview

- **Ports of Entry:** Entry is possible in various locations, including Tahiti, Moorea, Bora Bora, Nuku Hiva, Hiva Oa, and more.
- **Requirements:** All yachts must declare crew at immigration, gendarmerie, and customs at their entry and departure points.
- **Stay Duration:** EU citizens enjoy unlimited stays. Non-EU citizens typically have a 90-day allowance. Unsure about your eligibility? Contact us for assistance.

Let Tahiti Crew simplify your arrival so you can focus on exploring the beauty of French Polynesia!

Entry Requirements for Non-EU Crew in French Polynesia:

Entry Options:

1. Present a valid outbound plane ticket from French Polynesia.
2. Use an agent to secure a bond letter for entry.

Arrival Procedures:

- At your first port of call, report to the gendarmerie/border police for customs clearance.
- Ensure the original clearance is stamped and mailed to customs headquarters in Tahiti.

Stay Limits for Vessels:

- Boats under 24 meters may remain for 24 consecutive months.
- For longer stays, you can “papeetize” the boat or leave French Polynesia for at least 6 months before returning.

Long-Stay Visa:

- Recommended to apply for a long-stay visa before arrival.
- Applications must be made at a French embassy or consulate, taking at least six weeks.
- Upon arrival, apply for a carte de séjour within the first two weeks. We offer a package to assist with this process.

Note: Visa extensions are granted only for emergencies like illness or vessel failure.

Registration with Tahiti Crew:

1. Email Kuuipo at yachts@tahiticrew.com with your boat name to receive the required document list.
2. Submit the requested documents.
3. Pay via our OSB link using a credit card.
4. Have your bond letter printed and keep us informed of your ETA.
5. Contact us or our agent in the Marquesas upon arrival.

Important: Bond letters are valid for 90 days from the date of check-in.

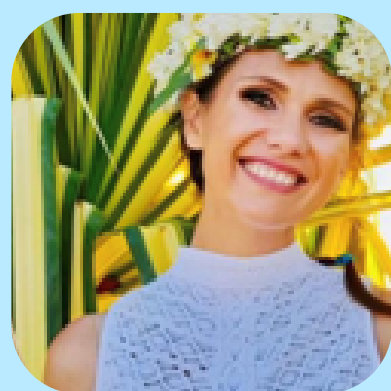
Tahiti Crew Discount Card

We are excited to introduce our new discount card for cruisers, included in your package. Enjoy exclusive deals through our partnerships with restaurants, accommodations, spas, and excursion companies in Tahiti, Moorea, and other islands.

Pick up your card in Tahiti and consult the discount list we can send you. Our office, located at Marina Taina, is open Monday to Friday, 8:00 AM to 3:00 PM.

Tahiti Crew is proud to renew its partnership with the Puddle Jump Rally in 2025. We look forward to welcoming you to French Polynesia and are here to assist with any questions about your arrival.

Contact us



Tehani



Kuuipo



Ioane



Tristan



Tavarua

- Main Contact : Kuuipo – yachts@tahiticrew.com
- Accounting : Ioane – accounts@tahiticrew.com
- Technical & Repairs : Tristan – repairs@tahiticrew.com
- Excursions & Activities : info@tahiticrew.com

Follow us on :

- Facebook : Tahiti Crew
- Facebook Group : Tahiti Yacht Events Group
- Instagram : [@tahiti_crewagency](https://www.instagram.com/tahiti_crewagency)
- Tiktok : [@tahiti.crew.agency](https://www.tiktok.com/@tahiti.crew.agency)

We'd love to feature your blogs! Share them with us at info@tahiticrew.com.

Our office at Marina Taina is open Monday to Friday, 8:00 AM to 3:00 PM.

Tahiti Crew is delighted to renew our partnership with the 2025 Puddle Jump rally.

We look forward to welcoming you to French Polynesia and are available to assist with any arrival inquiries.